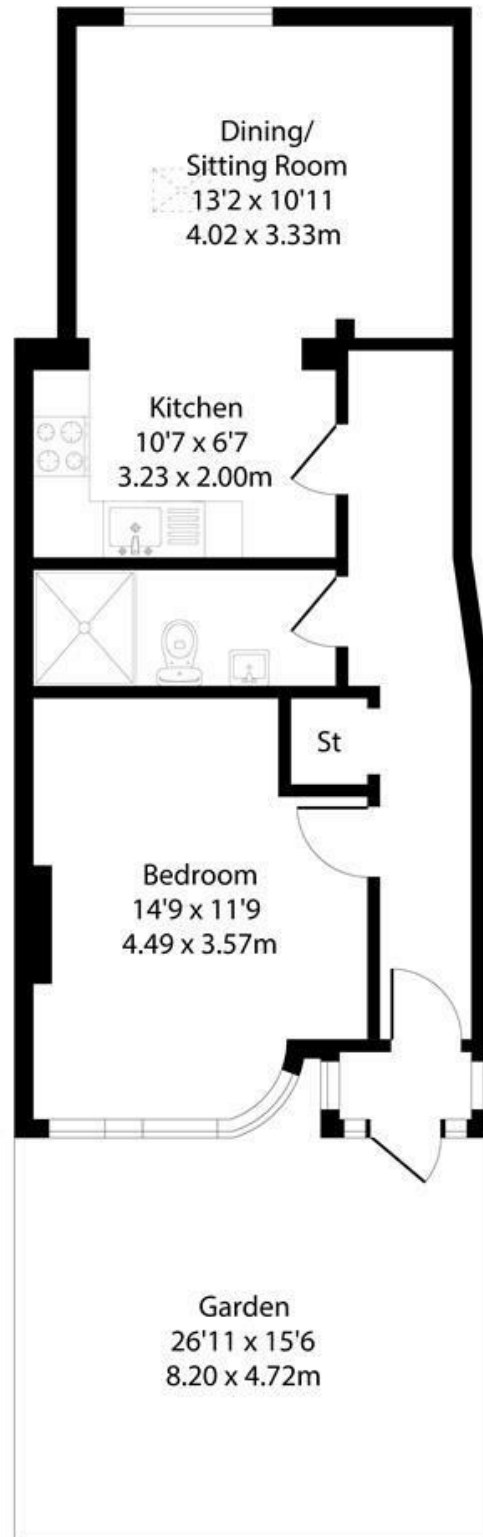
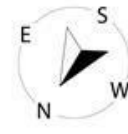


Otterburn Gardens, Isleworth, TW7
Approximate Floor Area = 50.9 sq m / 549 sq ft



FLAT

Otterburn Gardens TW7
£1,498 Per Month

FEATURES

- One Bedroom Flat
- Private Garden
- Own Entrance
- Syon Lane, Osterley and Isleworth Stations all close by
- Excellent Condition

FLAT

Otterburn Gardens TW7

£1,498 Per Month

Welcome to this charming flat located in the desirable area of Otterburn Gardens, Isleworth. This delightful property features two well-proportioned bedrooms, making it an ideal choice for couples, small families, or individuals seeking a comfortable living space.

Situated in Isleworth, this property benefits from a peaceful residential setting while still being conveniently close to local shops, parks, and transport links. This makes it easy to explore the surrounding areas or commute to central London for work or leisure.

